

GG90 SERIES

90 degree rotary couplings

INTRODUCTION

Holmbury's GG90 Series 90 degree rotary couplings are designed for use on hydraulics lines that may be subject to torsional stress to allow rotation of hydraulic pipes and hoses. Using a rotary coupling in the hydraulic line stops the hose twisting, limiting stress and increasing hose lifespan.

CONSTRUCTION

- Carbon steel with trivalent plating
- Fitted with Nitrile seals
- Also available in AISI 316 stainless steel (See SR90 Series)

FEATURES

- Reduces torsional forces
- Can also be used in applications that are required to rotate but not under pressure, such as hose reels
- Spindle is carried on a roller bearing and has a low friction shaft seal that can rotate at maximum pressure with low torque

SPECIFICATIONS

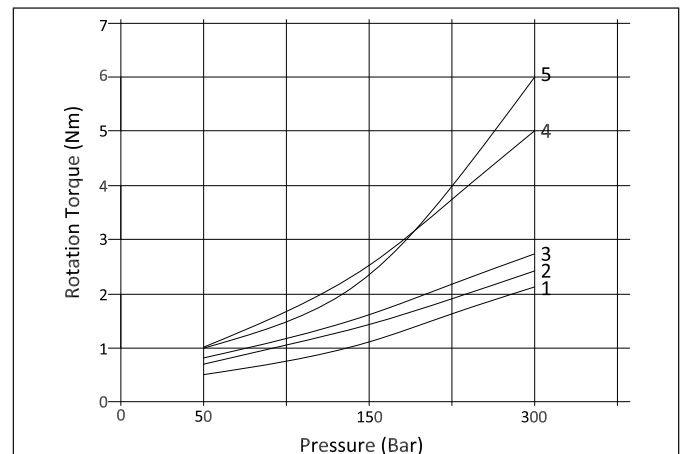
- Operating temperatures (with Nitrile seals): -40°C (-40°F) to 106°C (223°F)

APPLICATIONS

- Designed for usage in general hydraulic systems, machine tools, test equipment, agricultural, and mobile hydraulics



ROTATIONAL TORQUE



ORDER CODES

		GG90 - 19 - 12		G	M - 12	G		
Series		GG90				Thread Type (Female Only)		
						G = BSPP N = NPT		
Body Size						Thread Size (P2)		
06 - 1/4"	25 - 1"					04 - 1/4"	16 - 1"	
10 - 3/8"	32 - 1 1/4"					06 - 3/8"	20 - 1 1/4"	
12 - 1/2"	40 - 1 1/2"					08 - 1/2"	24 - 1 1/2"	
19 - 3/4"	50 - 2"					12 - 3/4"	32 - 2"	
		Thread Size (P1)			Thread Type			
		04 - 1/4"	16 - 1"		G = BSPP			
		06 - 3/8"	20 - 1 1/4"		N = NPT			
		08 - 1/2"	24 - 1 1/2"					
		12 - 3/4"	32 - 2"					

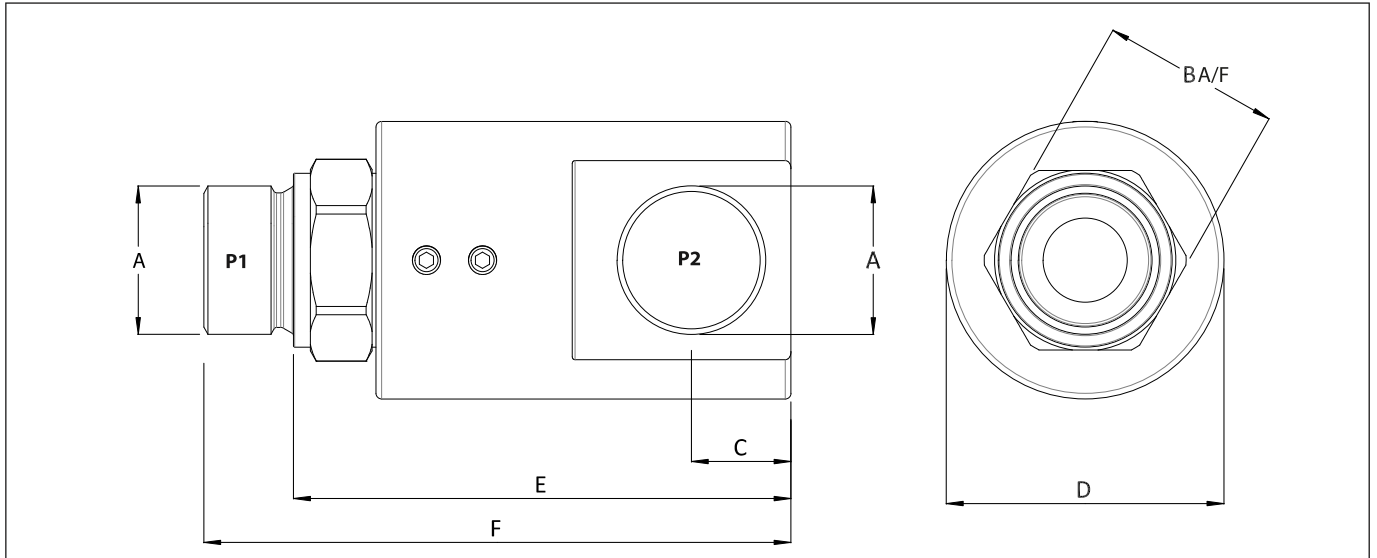
Contact Holmbury for special requests on thread types/sizes not listed



Holmbury Ltd: sales@holmbury.com | +44 (0) 1732 378912

GG90 SERIES

DRAWING



DIMENSIONS

Size	Thread Size (A)	B	C	ØD	E	F	Maximum Working Pressure	Maximum Flow Rate	Maximum Rotational Speed*
		Dimensions in mm					Bar	L/Min	RPM
		Dimensions in Inches					Psi		
GG90-06	1/4"	19	11.3	33	57.5	71	400	25	500
		0.7	0.4	1.3	2.3	2.8	5800		
GG90-10	3/8"	24	13.5	37.7	65.7	77.5	400	45	400
		0.9	0.5	1.5	2.6	3.1	5800		
GG90-12	1/2"	27	16.3	39.5	77.5	91.4	360	80	370
		1.1	0.6	1.6	3.1	3.6	5220		
GG90-19	3/4"	34	19	55.9	81	100	310	120	280
		1.3	0.7	2.2	3.2	3.9	4495		
GG90-25	1"	41.2	22.8	59.5	101	120	280	150	230
		1.6	0.9	2.3	4.0	4.7	4060		
GG90-32	1 1/4"	50	32	64.5	84.1	120	250	200	200
		2.0	1.3	2.5	3.3	4.7	3625		
GG90-40	1 1/2"	55	39	76	114.5	137.5	210	250	170
		2.2	1.5	3.0	4.5	5.4	3045		
GG90-50	2"	70	43.5	86	123.4	149	180	300	140
		2.8	1.7	3.4	4.9	5.9	2610		

*Note: The maximum rotational speed quoted is for zero pressure and hydraulic oils

PSI= Bar x14.5 Inches= mm/25.4

